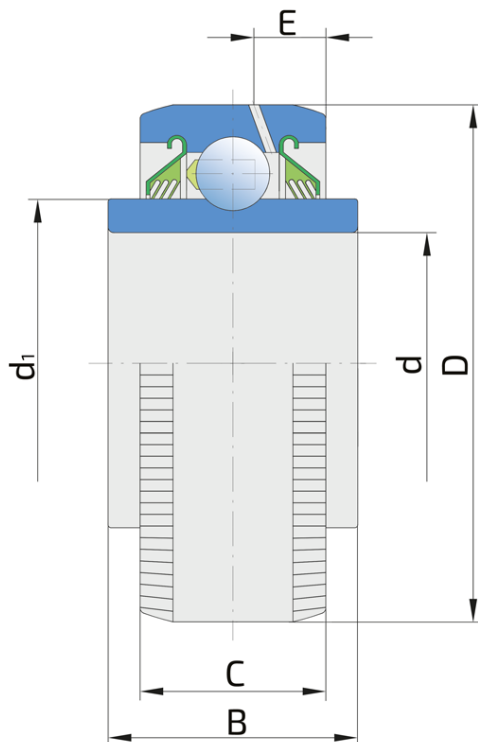
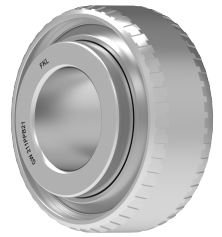


# Round Bore Series With Cylindrical Outer Ring - Relubricable Type

## GW 211PPB21

Round Bore Series With Cylindrical Outer Ring - Relubricable Type



### Technical Specification

d	Bore diameter	1.78 inch
d	Bore diameter	45.21 mm
D	Outside diameter	3.979 inch
D	Outside diameter	101.067 mm
B	Width inner ring	2.125 inch
B	Width inner ring	53.975 mm
C	Width outer ring	1.438 inch
C	Width outer ring	36.525 mm
d1	Outer diameter inner ring	2.72 inch
d1	Outer diameter inner ring	69.1 mm
E	Distance from raceway centre to the hole for lubrication	1 inch
E	Distance from raceway centre to the hole for lubrication	15.6 mm
C <sub>dyn</sub>	Dynamic load rating	43.5 kN
C <sub>o</sub>	Static load rating	29 kN
kg	Mass	1.49 kg

## Sealing

---

### T SEAL / T SEAL (2T)

3-lip seal on the both side of the bearing, provides equal protection against contamination. Recommended for application where the possibility of contamination is the same on the both side.

