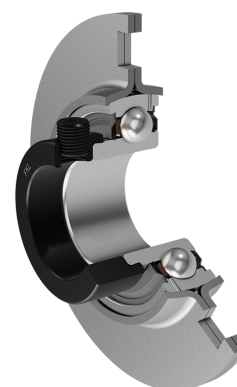
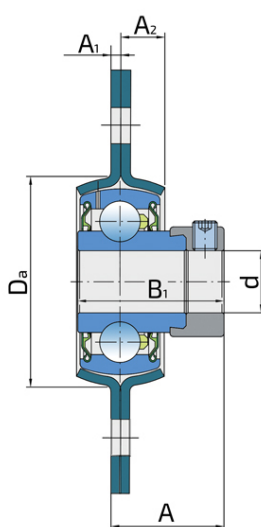
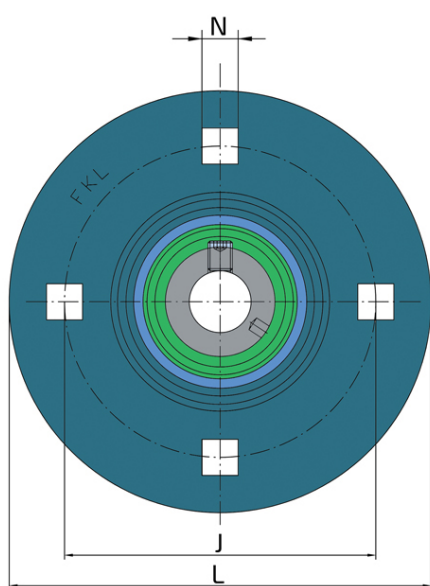


# Y-Bearing Flanged Units With Round Pressed Steel Housing "C"

## UYC 208 2S

Y-Bearing Flanged Units With Round Pressed Steel Housing "C"



### Technical Specification

d	Bore diameter	40 mm
B1	Width inner ring with locking collar	43.7 mm
Da	Centering diameter	91 mm
L	Diameter of housings	148 mm
A	Distance from the housing flange to the front of the inner ring of the bearing	36.2 mm
A1	Housing flange thickness	3.5 mm
A2	Half-housing width	11 mm
J	Pitch circle diameter	119 mm
N	Length of attachment bolt square hole	13.5 mm
Fr	Radial load	7.5 kN
Fa	Axial load	3.7 kN
kg	Mass	1.3 kg
Cdyn	Dynamic load rating	30.7 kN
Co	Static load rating	19 kN
Pu	Fatigue load limit	0.8 kN

## Sealing

---

### S SEAL / S SEAL (2S)

Single lip seal with the labyrinth between the sheet part and the rubber lip which conducts the contact sealing. The friction and speeds are the same as with RS but provides much better protection against the rough impurity particles. This is very good sealing system: the sheet part protects the seal from the soil, dust and rough particles. At the same time makes the labyrinth with the rubber part. The rubber part provides contact sealing which prevents penetration of finer impurities, water, moisture, steam etc. Suitable for neutral conditions because of the presence of the foreign materials. It is used with the Y bearing (standard) and deep groove ball bearings.

