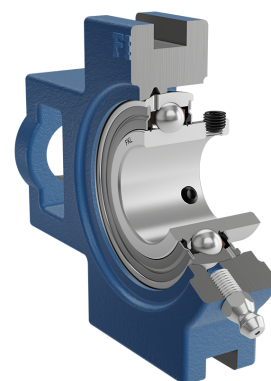
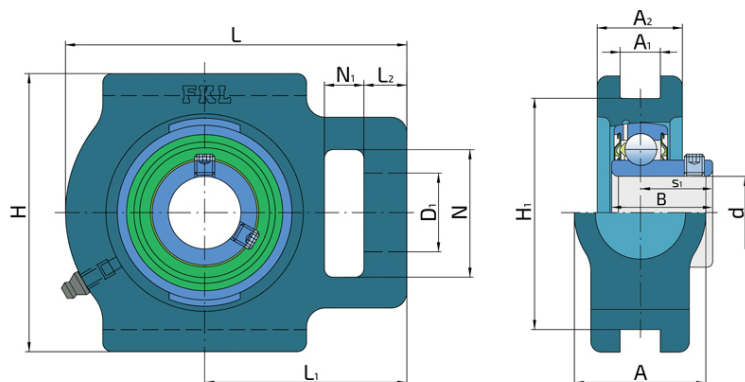
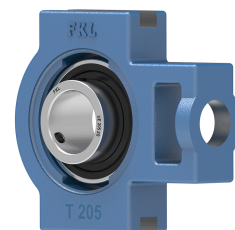


# Y-Bearing Take - Up Units With Grey Cast Iron Housings "T"

## UET 204 2S

Y-Bearing Take - Up Units With Grey Cast Iron Housings "T"



### Technical Specification

|      |  |         |
|------|--|---------|
| d    | Bore diameter  | 20 mm   |
| D1   | Hole diameter  | 19 mm   |
| L    | Overall length   | 97 mm   |
| L1   | Distance from the contact surface of housing to the bearing axis | 62 mm   |
| L2   | Length of attachment slot  | 16 mm   |
| A    | Overall width  | 34 mm   |
| A1   | Width of location slot   | 13.5 mm |
| A2   | Housing flange thickness   | 25 mm   |
| H    | Housing height   | 92 mm   |
| H1   | Distance between bottoms of location slot                        | 76 mm   |
| N    | Diameter of attachment slot                                      | 32 mm   |
| N1   | Length of attachment slot  | 10 mm   |
| s1   | Distance from locking device side face to raceway centre         | 18.3 mm |
| kg   | Mass   | 0.89 kg |
| Cdyn | Dynamic load rating  | 12.7 kN |
| Co   | Static load rating   | 6.55 kN |
| Pu   | Fatigue load limit   | 0.28 kN |

## Sealing

---

### S SEAL / S SEAL (2S)

Single lip seal with the labyrinth between the sheet part and the rubber lip which conducts the contact sealing. The friction and speeds are the same as with RS but provides much better protection against the rough impurity particles. This is very good sealing system: the sheet part protects the seal from the soil, dust and rough particles. At the same time makes the labyrinth with the rubber part. The rubber part provides contact sealing which prevents penetration of finer impurities, water, moisture, steam etc. Suitable for neutral conditions because of the presence of the foreign materials. It is used with the Y bearing (standard) and deep groove ball bearings.

