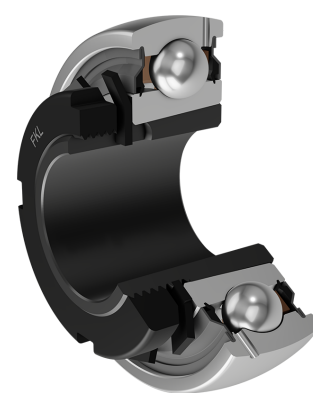
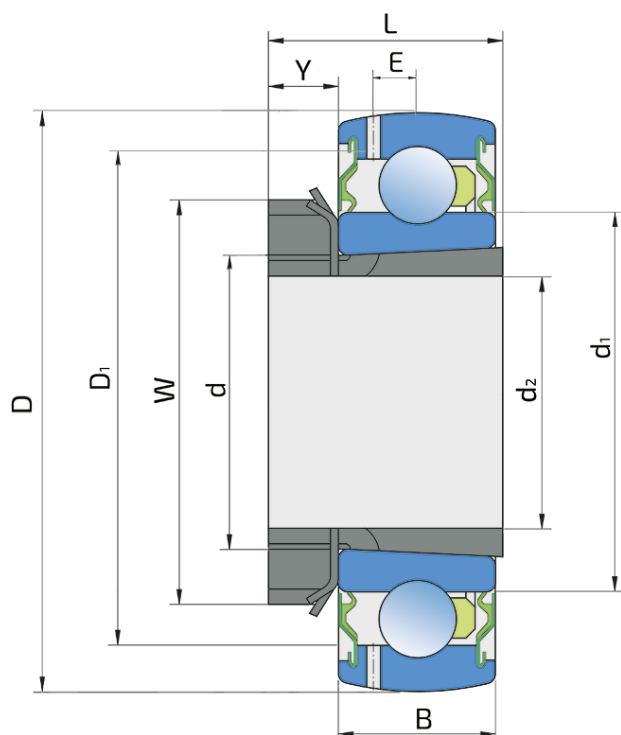


Y-Ball Bearings With Tapered Bore

UK 212 2S+H 212

Y-Ball Bearings With Tapered Bore



Technical Specification

d	Bore diameter	60 mm
D	Outside diameter	110 mm
B	Width inner ring	22 mm
C	Width outer ring	22 mm
d1	Outer diameter inner ring	75.5 mm
E	Distance from raceway centre to the hole for lubrication	7.7 mm
d2	Bore diameter-adapter sleeve	55 mm
D1	Hole diameter	95 mm
L	Width adapter sleeve	62 mm
W	KM nut outside diameter	80 mm
Y	KM nut width	13 mm
C _{dyn}	Dynamic load rating	52 kN
C _o	Static load rating	36 kN
P _u	Fatigue load limit	1.06 kN
kg	Mass	0.75 kg

Sealing

S SEAL / S SEAL (2S)

Single lip seal with the labyrinth between the sheet part and the rubber lip which conducts the contact sealing. The friction and speeds are the same as with RS but provides much better protection against the rough impurity particles. This is very good sealing system: the sheet part protects the seal from the soil, dust and rough particles. At the same time makes the labyrinth with the rubber part. The rubber part provides contact sealing which prevents penetration of finer impurities, water, moisture, steam etc. Suitable for neutral conditions because of the presence of the foreign materials. It is used with the Y bearing (standard) and deep groove ball bearings.

