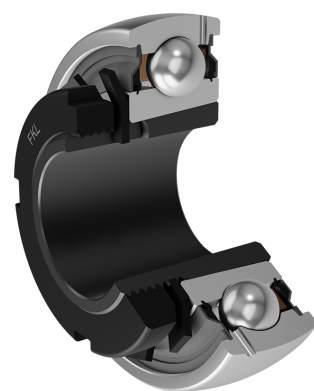
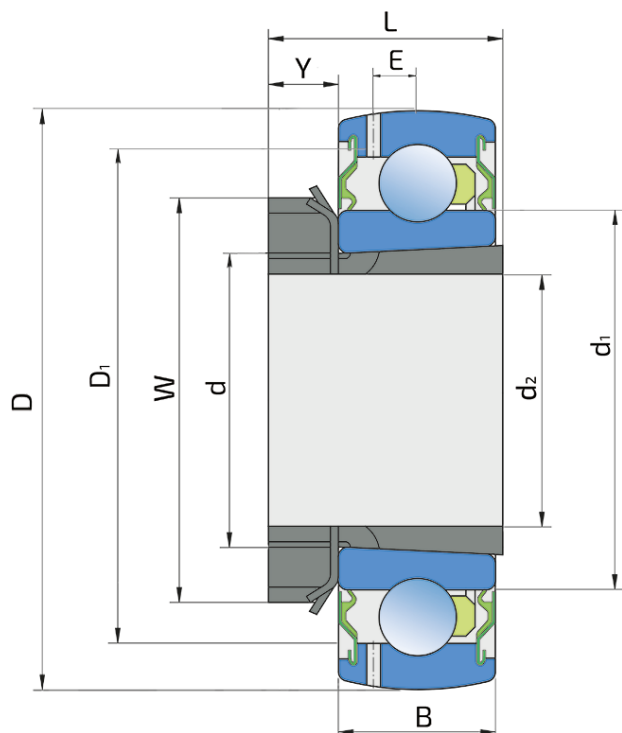


# Y-Ball Bearings With Tapered Bore

## UK 211 2S+H 211

Y-Ball Bearings With Tapered Bore



### Technical Specification

d	Bore diameter	55 mm
D	Outside diameter	100 mm
B	Width inner ring	21 mm
C	Width outer ring	21 mm
d1	Outer diameter inner ring	69.1 mm
E	Distance from raceway centre to the hole for lubrication	7 mm
d2	Bore diameter-adaptor sleeve	50 mm
D1	Hole diameter	85.9 mm
L	Width adapter sleeve	59 mm
W	KM nut outside diameter	75 mm
Y	KM nut width	12 mm
Cdyn	Dynamic load rating	43.5 kN
Co	Static load rating	29 kN
Pu	Fatigue load limit	0.865 kN
kg	Mass	0.59 kg

## Sealing

---

### S SEAL / S SEAL (2S)

Single lip seal with the labyrinth between the sheet part and the rubber lip which conducts the contact sealing. The friction and speeds are the same as with RS but provides much better protection against the rough impurity particles. This is very good sealing system: the sheet part protects the seal from the soil, dust and rough particles. At the same time makes the labyrinth with the rubber part. The rubber part provides contact sealing which prevents penetration of finer impurities, water, moisture, steam etc. Suitable for neutral conditions because of the presence of the foreign materials. It is used with the Y bearing (standard) and deep groove ball bearings.

