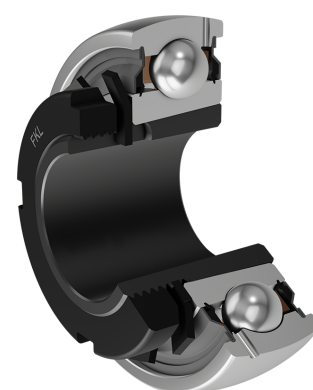
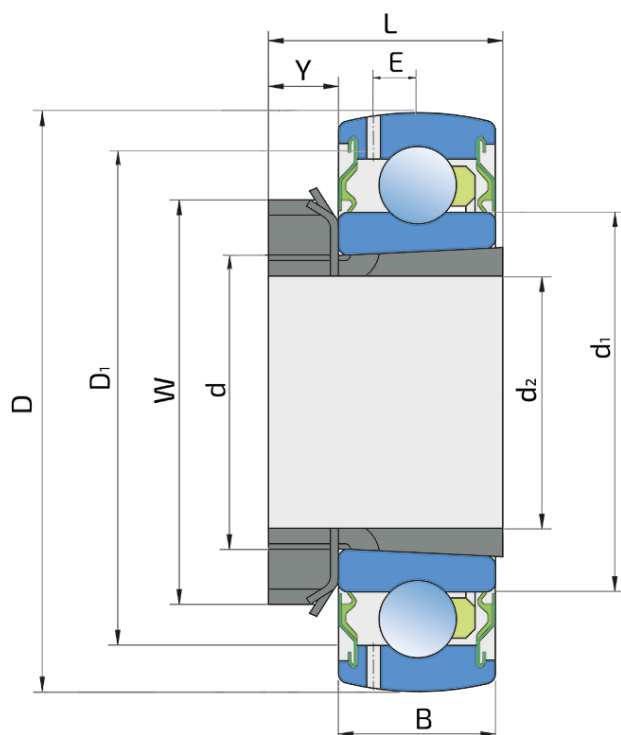


Y-Ball Bearings With Tapered Bore

UK 209 2S+H 209

Y-Ball Bearings With Tapered Bore



Technical Specification

d	Bore diameter	45 mm
D	Outside diameter	85 mm
B	Width inner ring	19 mm
C	Width outer ring	19 mm
d1	Outer diameter inner ring	56.6 mm
E	Distance from raceway centre to the hole for lubrication	6.1 mm
d2	Bore diameter-adaptor sleeve	40 mm
D1	Hole diameter	72.6 mm
L	Width adapter sleeve	33 mm
W	KM nut outside diameter	65 mm
Y	KM nut width	11 mm
C _{dyn}	Dynamic load rating	32.5 kN
C _o	Static load rating	20.4 kN
P _u	Fatigue load limit	0.64 kN
kg	Mass	0.39 kg

Sealing

S SEAL / S SEAL (2S)

Single lip seal with the labyrinth between the sheet part and the rubber lip which conducts the contact sealing. The friction and speeds are the same as with RS but provides much better protection against the rough impurity particles. This is very good sealing system: the sheet part protects the seal from the soil, dust and rough particles. At the same time makes the labyrinth with the rubber part. The rubber part provides contact sealing which prevents penetration of finer impurities, water, moisture, steam etc. Suitable for neutral conditions because of the presence of the foreign materials. It is used with the Y bearing (standard) and deep groove ball bearings.

