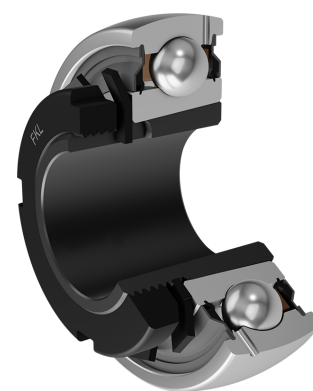
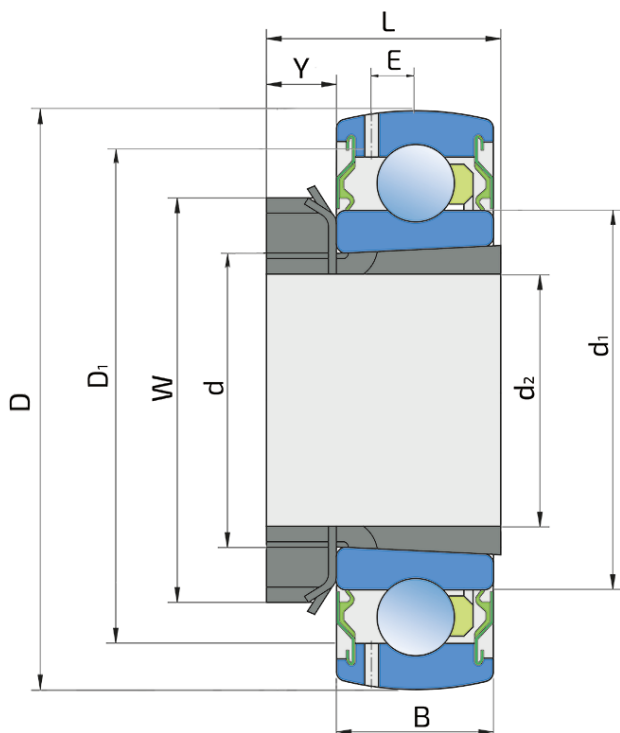


# Y-Ball Bearings With Tapered Bore

## UK 208 2S+H 208

Y-Ball Bearings With Tapered Bore



### Technical Specification

d	Bore diameter	40 mm
D	Outside diameter	80 mm
B	Width inner ring	18 mm
C	Width outer ring	18 mm
d1	Outer diameter inner ring	52 mm
E	Distance from raceway centre to the hole for lubrication	6.1 mm
d2	Bore diameter-adapter sleeve	35 mm
D1	Hole diameter	67.3 mm
L	Width adapter sleeve	31 mm
W	KM nut outside diameter	58 mm
Y	KM nut width	10 mm
C <sub>dyn</sub>	Dynamic load rating	32.5 kN
C <sub>o</sub>	Static load rating	19.8 kN
P <sub>u</sub>	Fatigue load limit	0.56 kN
kg	Mass	0.36 kg

## Sealing

---

### S SEAL / S SEAL (2S)

Single lip seal with the labyrinth between the sheet part and the rubber lip which conducts the contact sealing. The friction and speeds are the same as with RS but provides much better protection against the rough impurity particles. This is very good sealing system: the sheet part protects the seal from the soil, dust and rough particles. At the same time makes the labyrinth with the rubber part. The rubber part provides contact sealing which prevents penetration of finer impurities, water, moisture, steam etc. Suitable for neutral conditions because of the presence of the foreign materials. It is used with the Y bearing (standard) and deep groove ball bearings.

