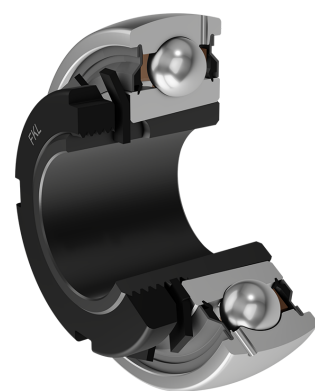
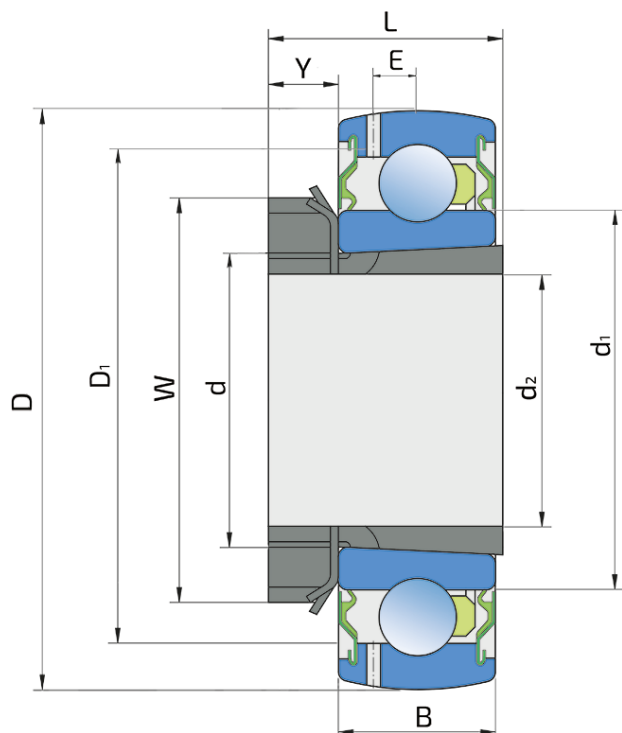


Y-Ball Bearings With Tapered Bore

UK 206 2S+H 206

Y-Ball Bearings With Tapered Bore



Technical Specification

d	Bore diameter	30 mm
D	Outside diameter	62 mm
B	Width inner ring	16 mm
C	Width outer ring	16 mm
d1	Outer diameter inner ring	39.7 mm
E	Distance from raceway centre to the hole for lubrication	5.1 mm
d2	Bore diameter-adapter sleeve	25 mm
D1	Hole diameter	51.6 mm
L	Width adapter sleeve	27 mm
W	KM nut outside diameter	45 mm
Y	KM nut width	8 mm
C _{dyn}	Dynamic load rating	19.5 kN
C _o	Static load rating	11.3 kN
P _u	Fatigue load limit	0.335 kN
kg	Mass	0.18 kg

Sealing

S SEAL / S SEAL (2S)

Single lip seal with the labyrinth between the sheet part and the rubber lip which conducts the contact sealing. The friction and speeds are the same as with RS but provides much better protection against the rough impurity particles. This is very good sealing system: the sheet part protects the seal from the soil, dust and rough particles. At the same time makes the labyrinth with the rubber part. The rubber part provides contact sealing which prevents penetration of finer impurities, water, moisture, steam etc. Suitable for neutral conditions because of the presence of the foreign materials. It is used with the Y bearing (standard) and deep groove ball bearings.

