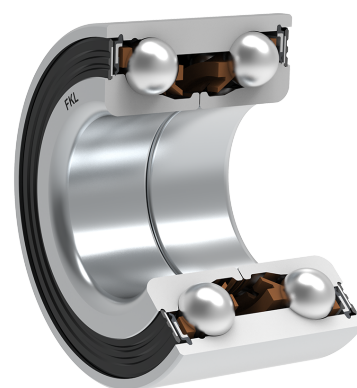
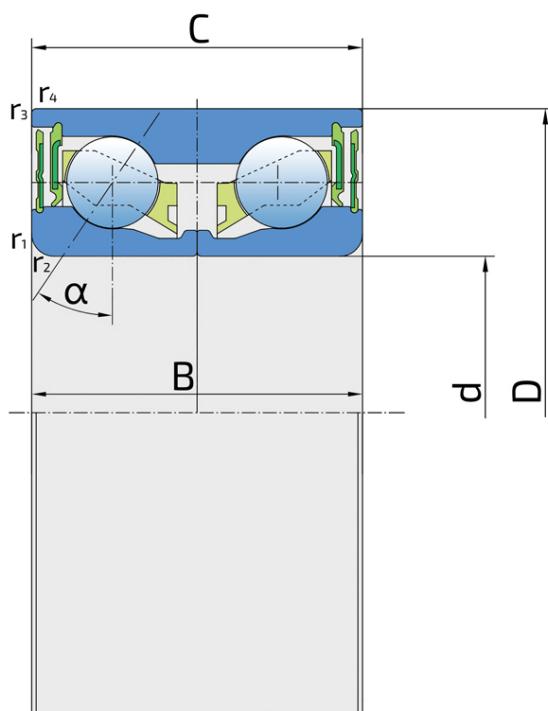


Double Row Angular Contact Ball Bearing

309726

Double Row Angular Contact Ball Bearing

Harvester



Technical Specification

d	Bore diameter	34 mm
D	Outside diameter	64 mm
B	Width inner ring	37 mm
C	Width outer ring	37 mm
α	Contact angle	34 °
r1,2	Inner ring Chamfer dimension	2.5 mm
r3,4	Outside ring Chamfer dimension	0.5 mm
kg	Mass	0.432 kg
Cdyn	Dynamic load rating	38.4 kN
Co	Static load rating	34.4 kN
Pu	Fatigue load limit	1.445 kN

Sealing

DOUBLE RS SEAL / DOUBLE RS SEAL (4RS)

The 4RS sealing on bearing refers to a sealing system that includes four rubber seals (RS) - two on each side of the bearing. 2RS seal on each side ensure good shielding from dirt, dust, and moisture; reduces grease leakage, extending bearing lifetime; reduces the need for frequent re-lubrication.

