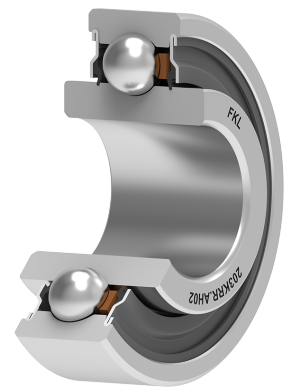
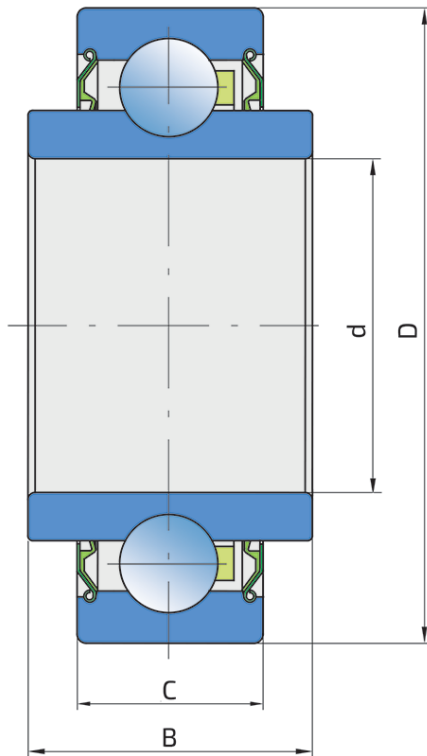


Ball Bearing

203KRR.AH02

Ball Bearing

Seeding Machine; Sprocket



Technical Specification

C _{dyn}	Dynamic load rating	9.5 kN
C _o	Static load rating	4.75 kN
D	Outside diameter	40 mm
d	Bore diameter	16.26 mm
C	D-shape hole cut out dimension	12 mm
kg	Mass	0.07 kg
B	Width inner ring	18.29 mm

Sealing

S SEAL / S SEAL (2S)

Single lip seal with the labyrinth between the sheet part and the rubber lip which conducts the contact sealing. The friction and speeds are the same as with RS but provides much better protection against the rough impurity particles. This is very good sealing system: the sheet part protects the seal from the soil, dust and rough particles. At the same time makes the labyrinth with the rubber part. The rubber part provides contact sealing which prevents penetration of finer impurities, water, moisture, steam etc. Suitable for neutral conditions because of the presence of the foreign materials. It is used with the Y bearing (standard) and deep groove ball bearings.

