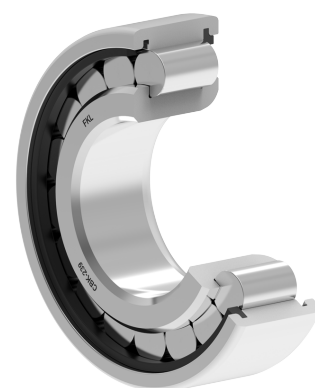
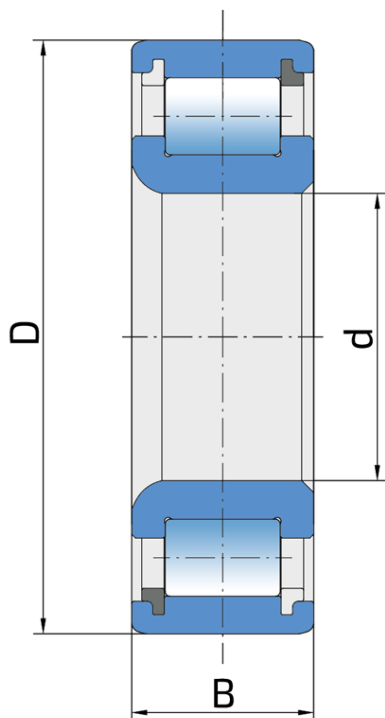


# Cylindrical Roller Bearing

## CBK-239

Cylindrical Roller Bearing  
Farm machineries



### Technical Specification

d	Bore diameter	30 mm
D	Outside diameter	62 mm
B	Width inner ring	19 mm
kg	Mass	0.26 kg
C <sub>dyn</sub>	Dynamic load rating	55 kN
C <sub>o</sub>	Static load rating	62.8 kN
P <sub>u</sub>	Fatigue load limit	2.638 kN

## Sealing

---

OPEN BEARING