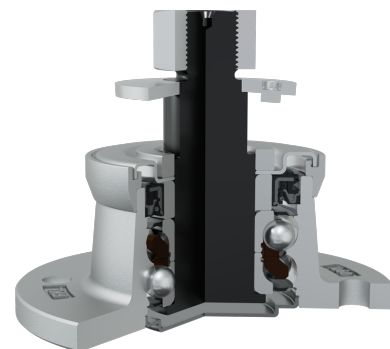
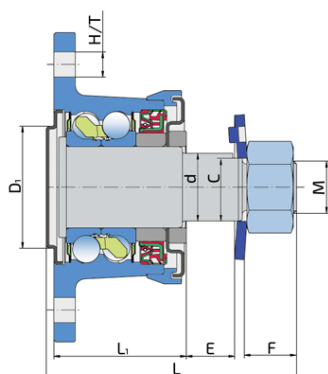
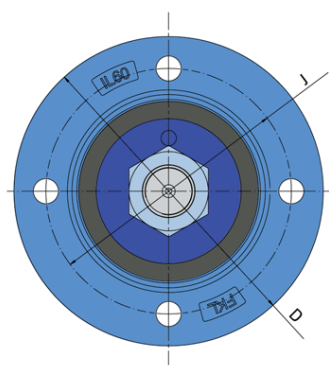


# Maintenance-Free Bearing With Integrated Flange For Harsh Tillage

## IL60-127/4H-04

Maintenance-Free Bearing With Integrated Flange For Harsh Tillage

Disc Harrow



### Technical Specification

J	Pitch circle diameter	127 mm
D	Outside diameter	160 mm
D1	Center bore on the disc	63.1 mm
H/T	Hole/Thread	4x13 mm
d	Bore diameter	35 mm
C	D-shape hole cut out dimension	32.5 mm
M	Outer Thread	M27x2 mm
L	Total length	129.5 mm
L1	Total flange length	68.5 mm
E	Required thickness of the disc arm	25 mm
F	Length of threaded part	28 mm
kg	Mass	4.613 kg
Cdyn	Dynamic load rating	75.86 kN
Co	Static load rating	66.2 kN
Pu	Fatigue load limit	2.78 kN

## Sealing

### SHEET METAL SHIELD + S SEAL / S SEAL + DIRTBLOCK SEAL + METAL SHIELD

Sheet metal shield and S seal on the base side and S seal and Dirtblock seal with Metal shield on the front side which is exposed to contaminants. Sheet metal shield and S seal together with attached disc eliminates the possibility of contamination from the base side. Dirtblock seal is designed for hard working condition at unfriendly environment. Half metal – half rubber outside diameter provides reliable seal retention in the bore and improves sealing performance. Inside diameter is covered by rubber and improves sealing performance and easy installation. Forged cover plate is additional, strong protection of the Dirtblock seal against mechanical damage. This sealing provides maximum protection against liquid or solid contaminants, which significantly extends bearing service life.

