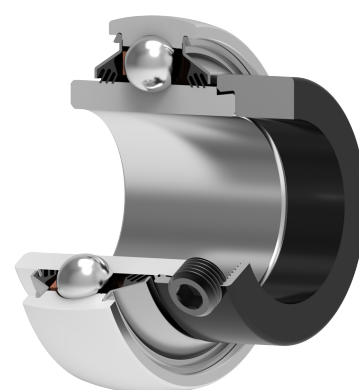
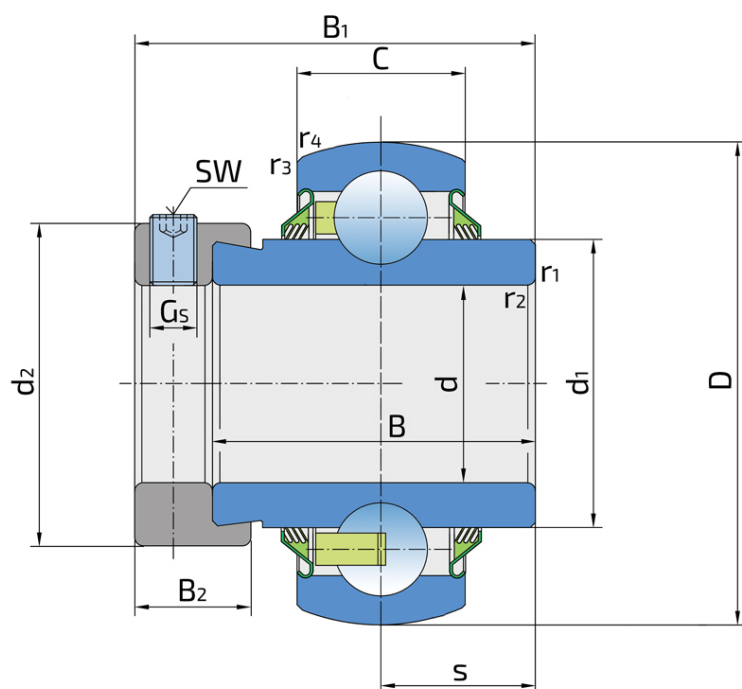


Y-Ball Bearings With Eccentric Locking Collar

LY 208-108 2T.H

Y-Ball Bearings With Eccentric Locking Collar



Technical Specification

d	Bore diameter	38.1 mm
D	Outside diameter	80 mm
B	Width inner ring	42.8 mm
C	Width outer ring	21 mm
s	Distance from inner ring side face to raceway centre	21.4 mm
d1	Outer diameter inner ring	51.8 mm
Gs	Set screw	3/8-24 UNF inch
sw	Hexagonal key size for set screw	4.763 mm
sw	Hexagonal key size for set screw	3/16 inch
r1,2	Inner ring Chamfer dimension	1 mm
r3,4	Outside ring Chamfer dimension	1.2 mm
B1	Width inner ring with locking collar	56.3 mm
d2	Locking collar outside diameter	58.1 mm
B2	Width locking collar	18.3 mm
kg	Mass	0.8 kg
Cdyn	Dynamic load rating	23.6 kN
Co	Static load rating	19.8 kN
Pu	Fatigue load limit	0.832 kN

Sealing

T SEAL / T SEAL (2T)

3-lip seal on the both side of the bearing, provides equal protection against contamination. Recommended for application where the possibility of contamination is the same on the both side.

