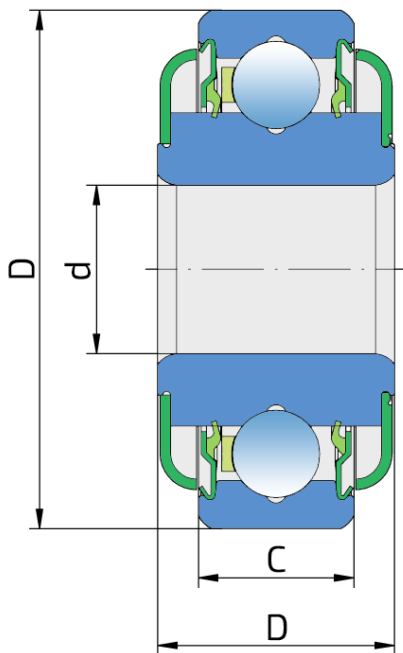
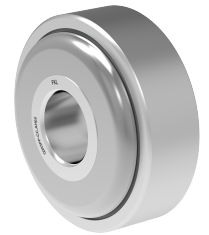


Ball Bearing

Q203PP-CC.AH05

Ball Bearing
Seeding Machine



Technical Specification

d	Bore diameter	13 mm
D	Outside diameter	40 mm
B	Width inner ring	18.3 mm
C	Width outer ring	12 mm
kg	Mass	0.092 kg
C _{dyn}	Dynamic load rating	15 kN
C _o	Static load rating	9.2 kN
P _u	Fatigue load limit	0.386 kN

Sealing

PROTECTIVE RING + S SEAL / S SEAL + PROTECTIVE RING

Dual sealing. Protective ring placed on the inner ring protects against rough impurity particles and makes the labyrinth with the sheet part of the seal; then the sealing S type, with the labyrinth between the sheet part and the rubber lip that conducts the contact sealing. The friction and speeds are the same as with S seal but has much better protection against rough impurity particles. It is very good sealing system: the sheet part protects the seal from the soil, dust and rough particles. At the same time makes the labyrinth with the rubber part. The rubber part provides the contact sealing that prevents the penetration of the finer impurities, water, moisture, steam etc. Suitable for heavier conditions due to better protection against foreign matters.

