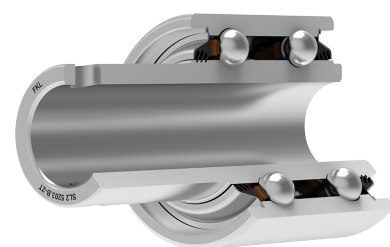
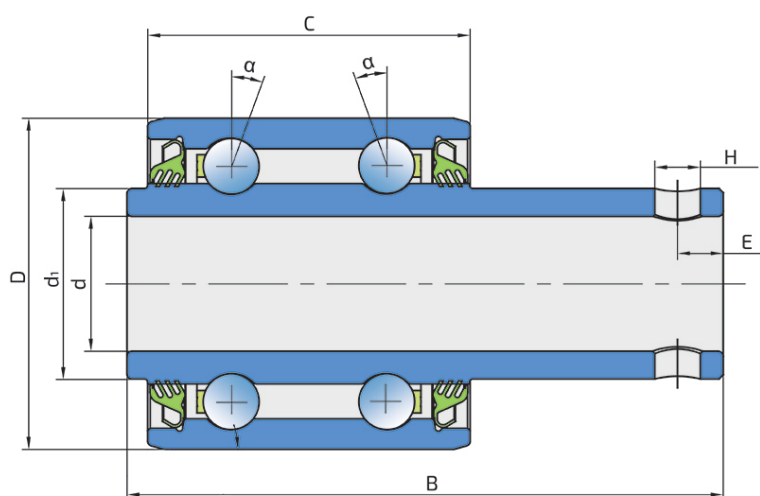


Double Row Angular Contact Ball Bearing

SL2 5203.B-2T

Double Row Angular Contact Ball Bearing
Seeder



Technical Specification

d	Bore diameter	16.3 mm
d1	Inner ring outside diameter	23 mm
D	Outside diameter	40 mm
B	Width inner ring	72 mm
C	Width outer ring	39.12 mm
H	Hole diameter	6 mm
E	Hole center line distance to the side face of the inner ring	5.5 mm
α	Contact angle	30 °
kg	Mass	0.267 kg
Cdyn	Dynamic load rating	14.2 kN
Co	Static load rating	8.8 kN
Pu	Fatigue load limit	0.37 kN

Sealing

T SEAL / T SEAL (2T)

3-lip seal on the both side of the bearing, provides equal protection against contamination. Recommended for application where the possibility of contamination is the same on the both side.

