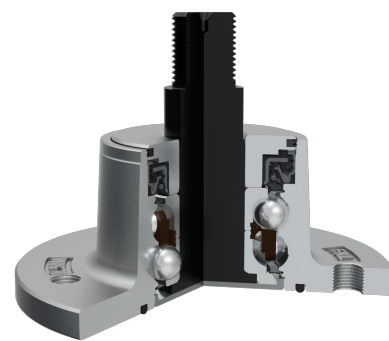
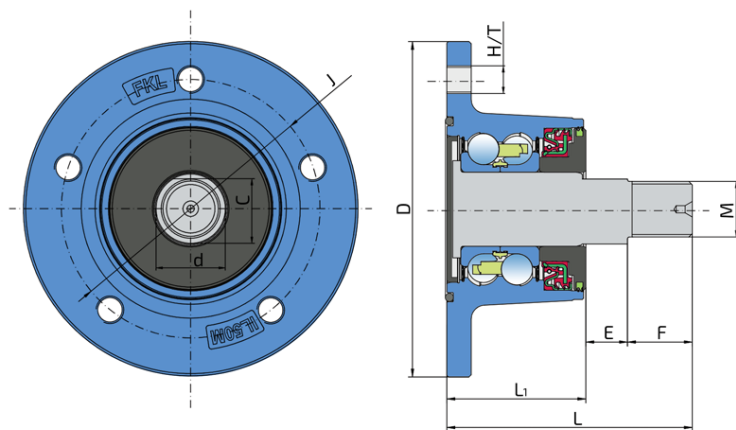


Maintenance-Free Bearing With Integrated Flange For Harsh Working Environments

IL50-112/5Tx1.5-M24x2

Maintenance-Free Bearing With Integrated Flange For Harsh Working Environments

Disc Harrow



Technical Specification

| | | |
|------|--------------------------------|--------------|
| J | Pitch circle diameter | 112 mm |
| D | Outside diameter | 145 mm |
| H/T | Hole/Thread | 5xM12x1.5 mm |
| d | Bore diameter | 30 mm |
| C | D-shape hole cut out dimension | 28 mm |
| M | Outer Thread | M24x2 mm |
| L | Total length | 106 mm |
| L1 | Total flange length | 60 mm |
| E | Length of D shape | 18 mm |
| F | Length of threaded part | 28 mm |
| kg | Mass | 2.99 kg |
| Cdyn | Dynamic load rating | 60 kN |
| Co | Static load rating | 45.8 kN |
| Pu | Fatigue load limit | 1.924 kN |

Sealing

O-RING + SHEET METAL SHIELD + RS SEAL / RS SEAL + DIRTBLOCK SEAL + DOUBLE SEAL + FORGED COVER PLATE

O-ring, Sheet metal shield and RS seal on the base side and RS seal, Dirtblock seal, Double seal and Forged cover plate on the front side which is exposed to contaminants. O-ring, Sheet metal shield and RS seal together with attached special disc eliminates the possibility of contamination from the base side. Dirtblock seal is designed for hard working conditions at unfriendly environment. Half metal – half rubber outside diameter provides reliable seal retention in the bore and improves sealing performance. Inside diameter is covered by rubber and improves sealing performance and easy installation. Forged cover plate is additional, strong protection of the Dirtblock seal against mechanical damage. Additional double seal protects the bearing from contaminant penetration and ensures a longer service life of the bearing.

