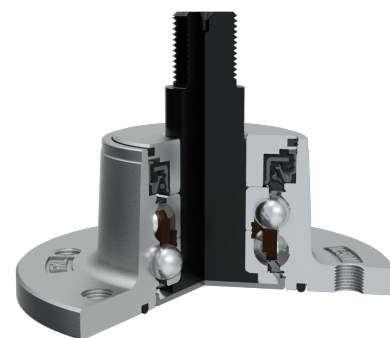
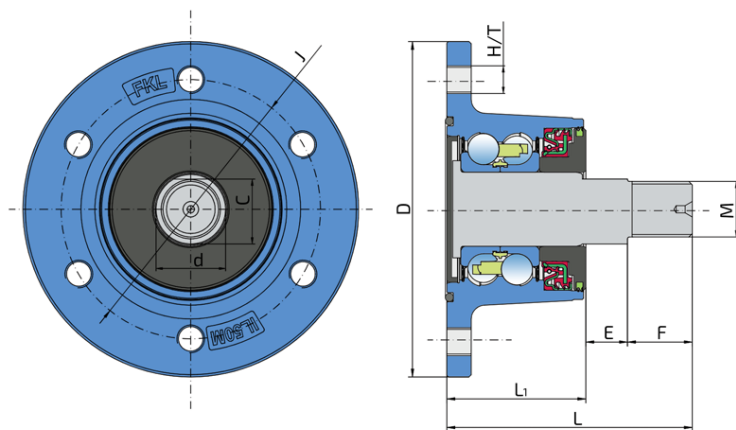


# Maintenance-Free Bearing With Integrated Flange For Harsh Working Environments

## IL50-112/6Tx1.5-M24x2

Maintenance-Free Bearing With Integrated Flange For Harsh Working Environments

Disc Harrow



### Technical Specification

J	Pitch circle diameter	112 mm
D	Outside diameter	145 mm
H/T	Hole/Thread	6xM12x1.5 mm
d	Bore diameter	30 mm
C	D-shape hole cut out dimension	28 mm
M	Outer Thread	M24x2 mm
L	Total length	106 mm
L1	Total flange length	60 mm
E	Length of D shape	18 mm
F	Length of threaded part	28 mm
kg	Mass	2.99 kg
Cdyn	Dynamic load rating	60 kN
Co	Static load rating	45.8 kN
Pu	Fatigue load limit	1.924 kN

## Sealing

### O-RING + SHEET METAL SHIELD + RS SEAL / RS SEAL + DIRTBLOCK SEAL + DOUBLE SEAL + FORGED COVER PLATE

O-ring, Sheet metal shield and RS seal on the base side and RS seal, Dirtblock seal, Double seal and Forged cover plate on the front side which is exposed to contaminants. O-ring, Sheet metal shield and RS seal together with attached special disc eliminates the possibility of contamination from the base side. Dirtblock seal is designed for hard working conditions at unfriendly environment. Half metal &ndash; half rubber outside diameter provides reliable seal retention in the bore and improves sealing performance. Inside diameter is covered by rubber and improves sealing performance and easy installation. Forged cover plate is additional, strong protection of the Dirtblock seal against mechanical damage. Additional double seal protects the bearing from contaminant penetration and ensures a longer service life of the bearing.

