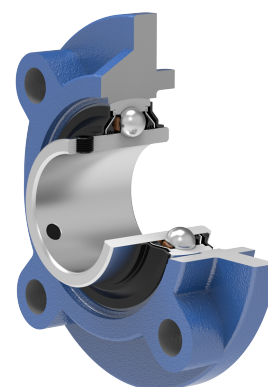
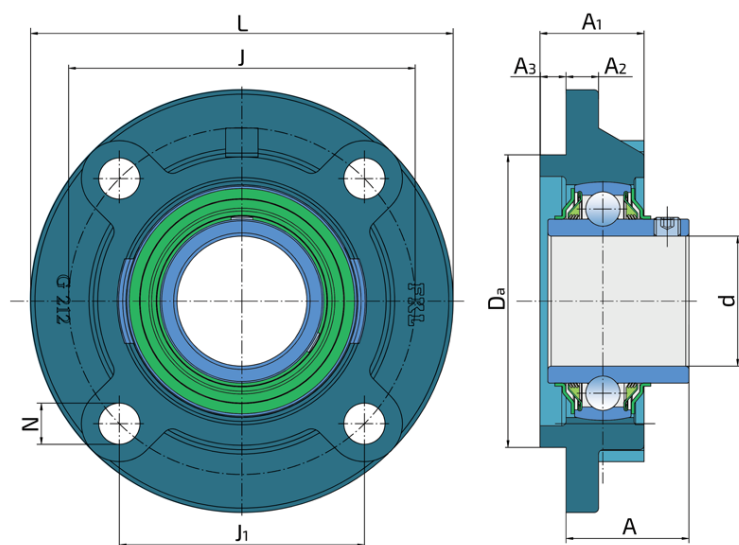


Y-Bearing Flanged Units With Round Grey Cast Iron Housing "G"

LEG 212 2TB.H

Y-Bearing Flanged Units With Round Grey Cast Iron Housing "G"



Technical Specification

d	Bore diameter	60 mm
Da	Centering diameter	135 mm
L	Overall width	195 mm
A	Distance from the housing flange to the front of the inner ring of the bearing	56.7 mm
A1	Total housing width	48 mm
A2	Housing flange thickness	15 mm
A3	Centering diameter height	12 mm
J	Pitch circle diameter	160 mm
J1	Distance between the holes	113.1 mm
N	Diameter of attachment slot	19 mm
kg	Mass	5.02 kg
Cdyn	Dynamic load rating	52.7 kN
Co	Static load rating	36 kN
Pu	Fatigue load limit	1.53 kN

Sealing

METAL FLINGER RING+T SEAL / T SEAL+ METAL FLINGER RING (2TB)

3-lip seal with Metal flinger ring on the both side of the bearing, provides equal protection against contamination. The Metal flinger ring protects the seal from mechanical damage.

