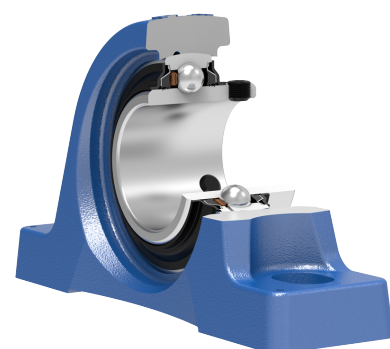
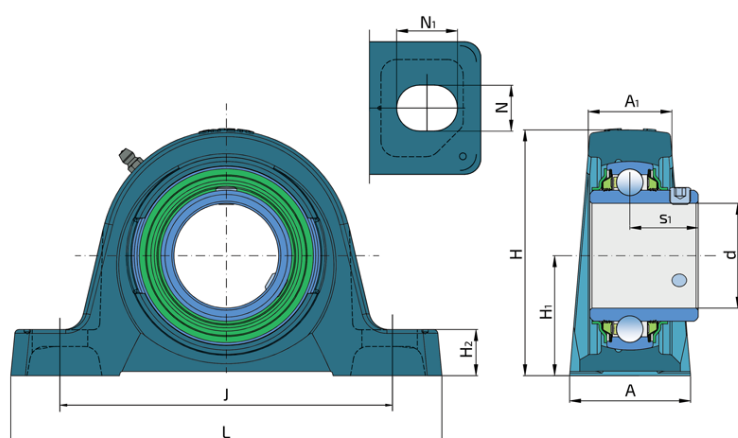
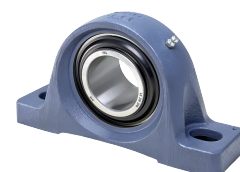


Y-Bearing Plummer Block Units With Grey Cast Iron Housing "S"

LESN 210 2TB

Y-Bearing Plummer Block Units With Grey Cast Iron Housing "S"



Technical Specification

d	Bore diameter	50 mm
L	Overall length	206 mm
A	Housing contact surface width	58 mm
A1	Width of the top of the housing	38 mm
H	Housing height	113.2 mm
H1	Distance from the contact surface to the bearing axis	57.2 mm
H2	Housing foot thickness	22 mm
Jmin	Min. distance between the holes	151 mm
Jmax	Max. distance between the holes	164 mm
N	Height of attachment slot	20 mm
N1	Length attachment end	26.5 mm
s1	Distance from locking device side face to raceway centre	32.6 mm
kg	Mass	2.74 kg
Cdyn	Dynamic load rating	35.1 kN
Co	Static load rating	23.2 kN
Pu	Fatigue load limit	0.98 kN

Sealing

PB SEAL / PB SEAL (2PB)

A 5-lip seal with Metal flinger ring on the both side of the bearing, provides equal protection against contamination. 5-lip seal provides a high level of the bearing protection from impurities and due to the special design of the seal the rotation speed can be doubled. The Metal flinger ring protects the seal from mechanical damage.

