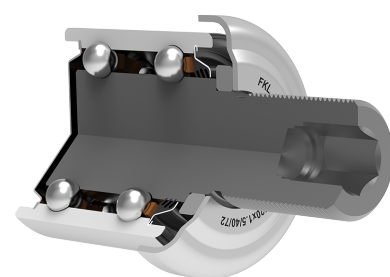
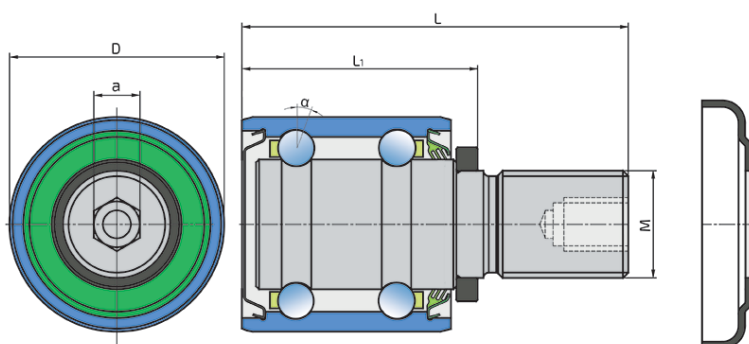


Double Row Ball Bearings With Shaft

VP-M20x1.5/40/72-R(L)

Double Row Ball Bearings With Shaft
Seeding Machine



Technical Specification

a	Hexagonal bore	10 mm
d	Bore diameter	24.2 mm
D	Outside diameter	40 mm
L	Total length	72 mm
L1	Installation length	44 mm
M	Outer Thread	M20x1.5 mm
α	Contact angle	20 °
kg	Mass	0.44 kg
Cdyn	Dynamic load rating	14.2 kN
Co	Static load rating	8.8 kN
Pu	Fatigue load limit	0.37 kN

Sealing

SHEET METAL SHIELD / T SEAL

Sheet metal shield on one side and triple seal on the other. The sheet metal shield eliminates the possibility of contamination, while the triple seal on the other side provides long-lasting protection against the penetration of all types of contaminants.

