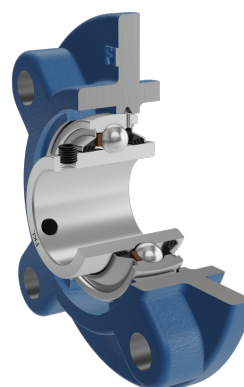
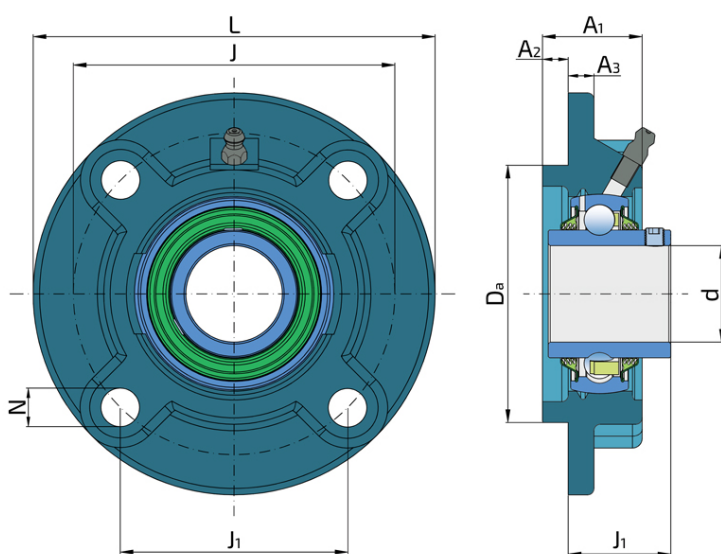


Y-Bearing Flanged Units With Round Grey Cast Iron Housing "G"

LEG 209 2T

Y-Bearing Flanged Units With Round Grey Cast Iron Housing "G"



Technical Specification

d	Bore diameter	45 mm
Da	Centering diameter	105 mm
L	Overall width	160 mm
A	Distance from the housing flange to the front of the inner ring of the bearing	40.2 mm
A1	Total housing width	38 mm
A2	Housing flange thickness	14 mm
A3	Centering diameter height	12 mm
J	Pitch circle diameter	132 mm
J1	Distance between the holes	93.3 mm
N	Diameter of attachment slot	16 mm
kg	Mass	2.64 kg
Cdyn	Dynamic load rating	33.2 kN
Co	Static load rating	21.6 kN
Pu	Fatigue load limit	0.915 kN

Sealing

T SEAL / T SEAL (2T)

3-lip seal on the both side of the bearing, provides equal protection against contamination. Recommended for application where the possibility of contamination is the same on the both side.

