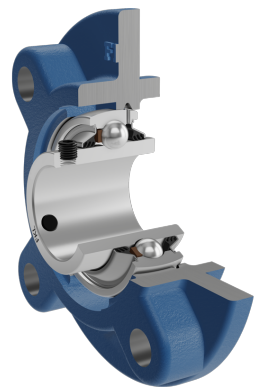
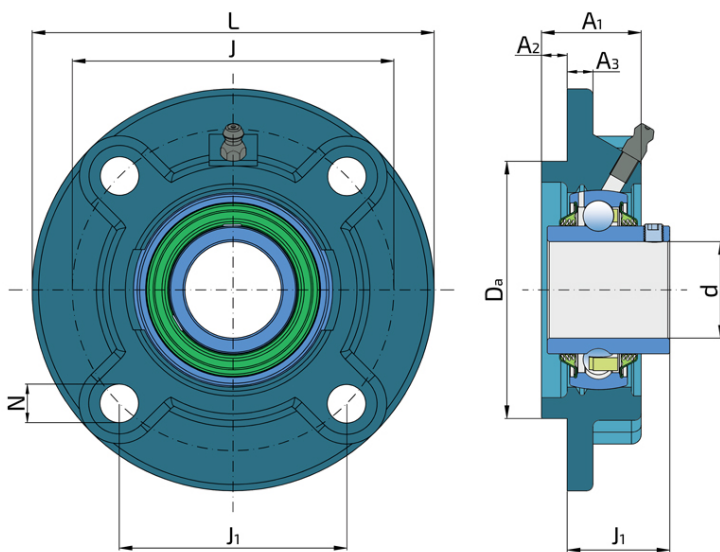


Y-Bearing Flanged Units With Round Grey Cast Iron Housing "G"

LEG 208 2T

Y-Bearing Flanged Units With Round Grey Cast Iron Housing "G"



Technical Specification

d	Bore diameter	40 mm
Da	Centering diameter	100 mm
L	Overall width	145 mm
A	Distance from the housing flange to the front of the inner ring of the bearing	41.2 mm
A1	Total housing width	36 mm
A2	Housing flange thickness	9 mm
A3	Centering diameter height	10 mm
J	Pitch circle diameter	120 mm
J1	Distance between the holes	84.8 mm
N	Diameter of attachment slot	14 mm
kg	Mass	1.89 kg
Cdyn	Dynamic load rating	30.7 kN
Co	Static load rating	19 kN
Pu	Fatigue load limit	0.8 kN

Sealing

T SEAL / T SEAL (2T)

3-lip seal on the both side of the bearing, provides equal protection against contamination. Recommended for application where the possibility of contamination is the same on the both side.

