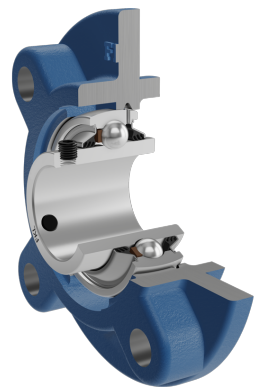
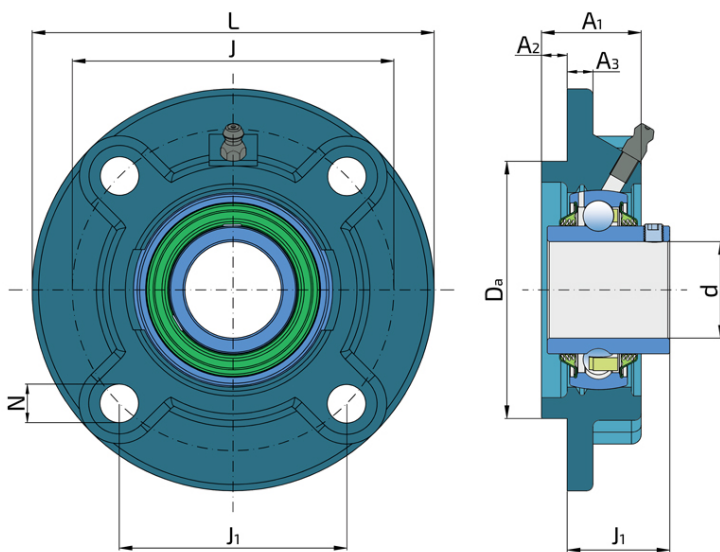


# Y-Bearing Flanged Units With Round Grey Cast Iron Housing "G"

## LEG 207 2T

Y-Bearing Flanged Units With Round Grey Cast Iron Housing "G"



### Technical Specification

d	Bore diameter	35 mm
Da	Centering diameter	90 mm
L	Overall width	135 mm
A	Distance from the housing flange to the front of the inner ring of the bearing	36.5 mm
A1	Total housing width	34 mm
A2	Housing flange thickness	9 mm
A3	Centering diameter height	8 mm
J	Pitch circle diameter	110 mm
J1	Distance between the holes	77.8 mm
N	Diameter of attachment slot	14 mm
kg	Mass	1.64 kg
Cdyn	Dynamic load rating	25.5 kN
Co	Static load rating	15.3 kN
Pu	Fatigue load limit	0.655 kN

## Sealing

---

### T SEAL / T SEAL (2T)

3-lip seal on the both side of the bearing, provides equal protection against contamination. Recommended for application where the possibility of contamination is the same on the both side.

