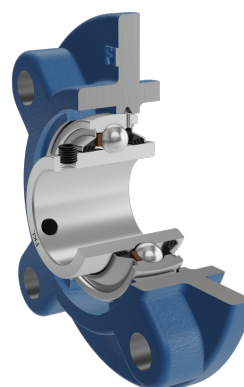
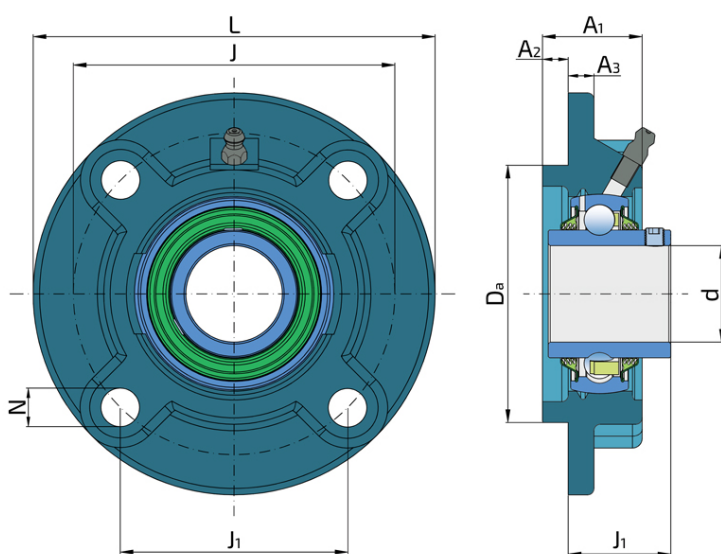


Y-Bearing Flanged Units With Round Grey Cast Iron Housing "G"

LEG 206 2T

Y-Bearing Flanged Units With Round Grey Cast Iron Housing "G"



Technical Specification

d	Bore diameter	30 mm
Da	Centering diameter	80 mm
L	Overall width	125 mm
A	Distance from the housing flange to the front of the inner ring of the bearing	32.2 mm
A1	Total housing width	31 mm
A2	Housing flange thickness	8 mm
A3	Centering diameter height	8 mm
J	Pitch circle diameter	100 mm
J1	Distance between the holes	70.7 mm
N	Diameter of attachment slot	12 mm
kg	Mass	1.4 kg
Cdyn	Dynamic load rating	19.5 kN
Co	Static load rating	11.2 kN
Pu	Fatigue load limit	0.475 kN

Sealing

T SEAL / T SEAL (2T)

3-lip seal on the both side of the bearing, provides equal protection against contamination. Recommended for application where the possibility of contamination is the same on the both side.

