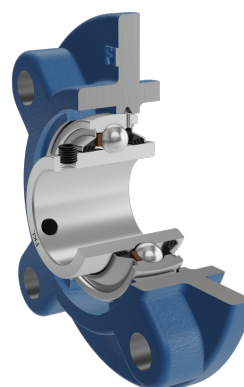
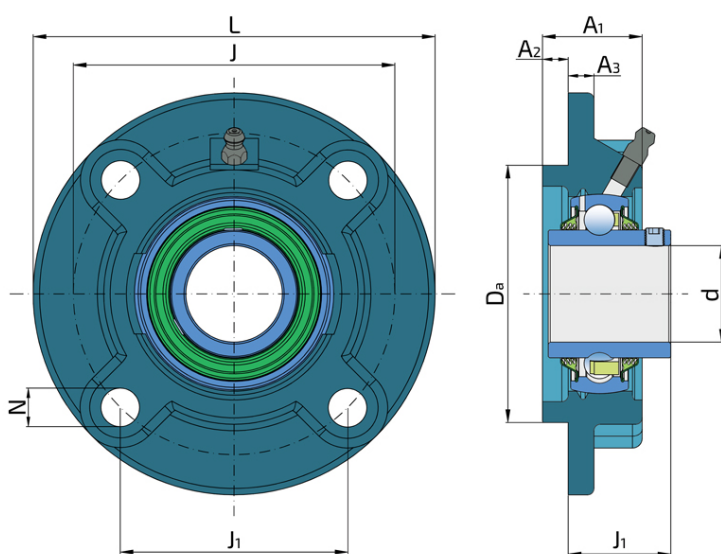


Y-Bearing Flanged Units With Round Grey Cast Iron Housing "G"

LEG 205 2T

Y-Bearing Flanged Units With Round Grey Cast Iron Housing "G"



Technical Specification

d	Bore diameter	25 mm
Da	Centering diameter	70 mm
L	Overall width	115 mm
A	Distance from the housing flange to the front of the inner ring of the bearing	29.5 mm
A1	Total housing width	27 mm
A2	Housing flange thickness	7 mm
A3	Centering diameter height	6 mm
J	Pitch circle diameter	90 mm
J1	Distance between the holes	63.6 mm
N	Diameter of attachment slot	12 mm
kg	Mass	0.98 kg
Cdyn	Dynamic load rating	14 kN
Co	Static load rating	7.8 kN
Pu	Fatigue load limit	0.335 kN

Sealing

T SEAL / T SEAL (2T)

3-lip seal on the both side of the bearing, provides equal protection against contamination. Recommended for application where the possibility of contamination is the same on the both side.

