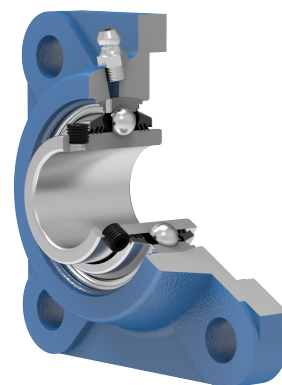
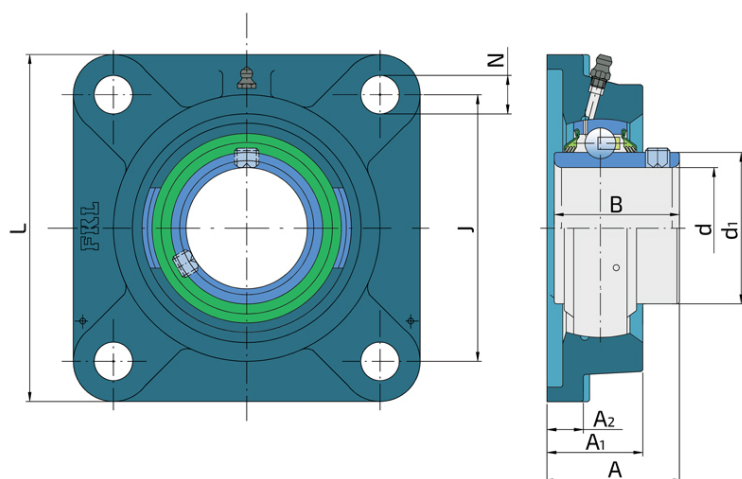


# Y-Bearing Flanged Units With Square Grey Cast Iron Housing "F"

## LEF 209 2T

Y-Bearing Flanged Units With Square Grey Cast Iron Housing "F"



### Technical Specification

d	Bore diameter	45 mm
d1	Outer diameter inner ring	56.8 mm
L	Total length	137 mm
J	Distance between the holes	105 mm
N	Hole diameter	16H13 mm
A	Overall width	52.2 mm
A1	Total housing width	38 mm
A2	Housing flange thickness	12 mm
B	Width inner ring	49.2 mm
kg	Mass	2.25 kg
Cdyn	Dynamic load rating	33.2 kN
Co	Static load rating	21.6 kN
Pu	Fatigue load limit	0.907 kN

## Sealing

---

### T SEAL / T SEAL (2T)

3-lip seal on the both side of the bearing, provides equal protection against contamination. Recommended for application where the possibility of contamination is the same on the both side.

