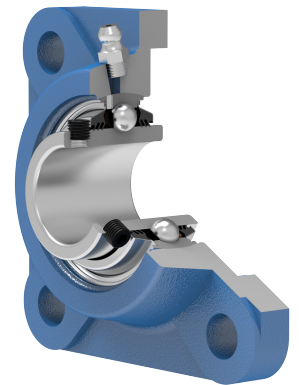
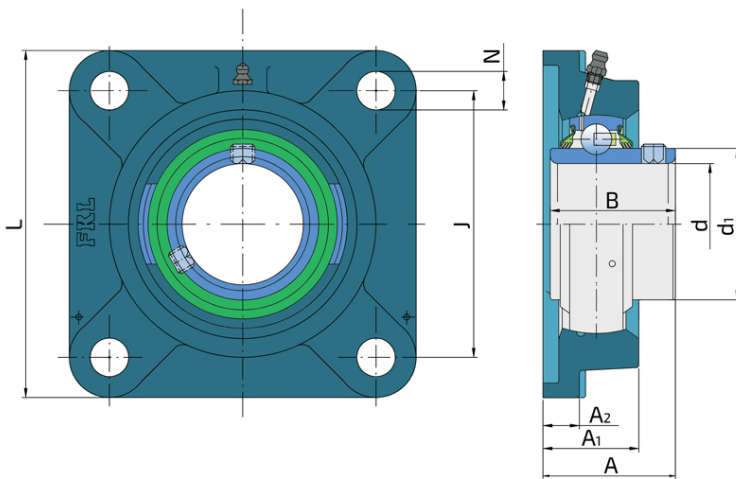
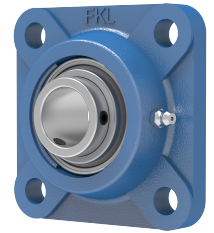


Y-Bearing Flanged Units With Square Grey Cast Iron Housing "F"

LEF 205 2T

Y-Bearing Flanged Units With Square Grey Cast Iron Housing "F"



Technical Specification

d	Bore diameter	25 mm
d1	Outer diameter inner ring	33.6 mm
L	Total length	95 mm
J	Distance between the holes	70 mm
N	Hole diameter	12H13 mm
A	Overall width	35.8 mm
A1	Total housing width	27 mm
A2	Housing flange thickness	9.5 mm
B	Width inner ring	34.1 mm
kg	Mass	0.75 kg
Cdyn	Dynamic load rating	14 kN
Co	Static load rating	7.8 kN
Pu	Fatigue load limit	0.328 kN

Sealing

T SEAL / T SEAL (2T)

3-lip seal on the both side of the bearing, provides equal protection against contamination. Recommended for application where the possibility of contamination is the same on the both side.

