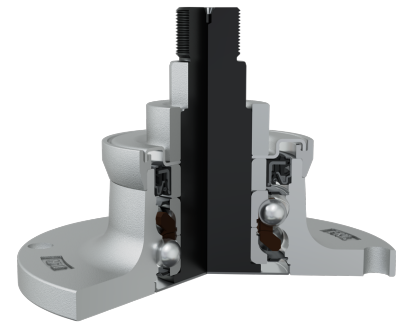
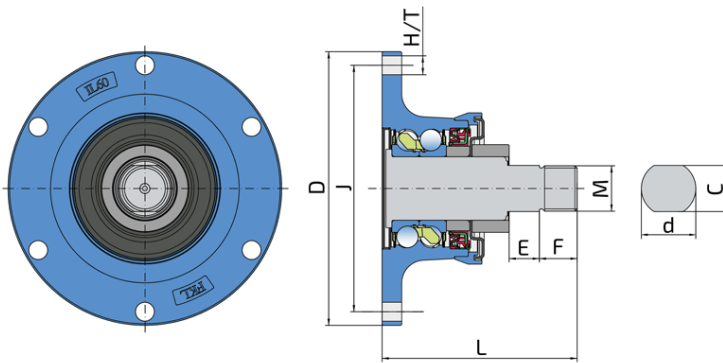


# Maintenance-Free Bearing With Integrated Flange For Harsh Tillage

## IL60-163/6H-M30

Maintenance-Free Bearing With Integrated Flange For Harsh Tillage  
Disc Harrow



### Technical Specification

J	Pitch circle diameter	163 mm
D	Outside diameter	181 mm
H/T	Hole/Thread	6x12.5 mm
d	Bore diameter	36 mm
C	D-shape hole cut out dimension	30.5 mm
M	Outer Thread	M30x1.5 mm
L	Total length	129 mm
E	Length of D shape	20 mm
F	Length of threaded part	25 mm
kg	Mass	5.422 kg
C <sub>dyn</sub>	Dynamic load rating	75.86 kN
C <sub>o</sub>	Static load rating	66.2 kN
P <sub>u</sub>	Fatigue load limit	2.78 kN

## Sealing

### SHEET METAL SHIELD + S SEAL / S SEAL + DIRTBLOCK SEAL + METAL SHIELD

Sheet metal shield and S seal on the base side and S seal and Dirtblock seal with Metal shield on the front side which is exposed to contaminants. Sheet metal shield and S seal together with attached disc eliminates the possibility of contamination from the base side. Dirtblock seal is designed for hard working condition at unfriendly environment. Half metal &ndash; half rubber outside diameter provides reliable seal retention in the bore and improves sealing performance. Inside diameter is covered by rubber and improves sealing performance and easy installation. Forged cover plate is additional, strong protection of the Dirtblock seal against mechanical damage. This sealing provides maximum protection against liquid or solid contaminants, which significantly extends bearing service life.

