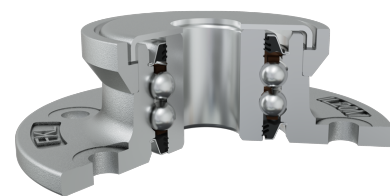
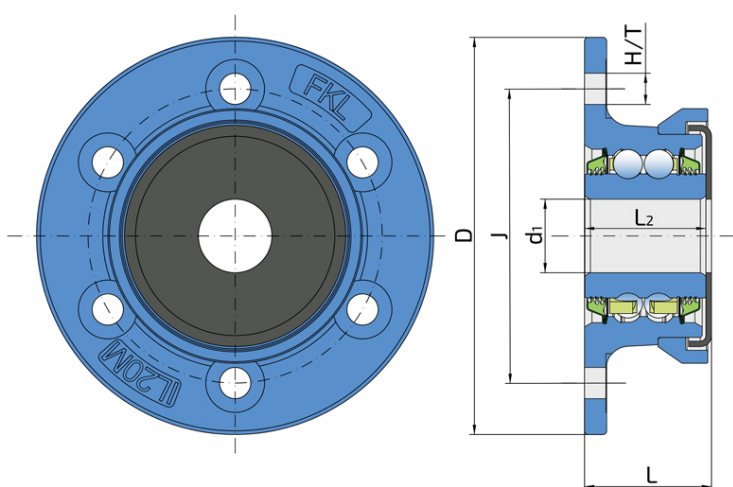


Double row angular contact ball bearing

IL20S-80/6H-B20

Double row angular contact ball bearing
Planters



Technical Specification

| | | |
|------|-----------------------|----------|
| J | Pitch circle diameter | 80 mm |
| D | Outside diameter | 108 mm |
| H/T | Hole/Thread | 6x8.5 mm |
| d1 | Bore diameter | 20 mm |
| L | Total length | 34.5 mm |
| L2 | Bearing width | 33 mm |
| kg | Mass | 0.729 kg |
| Cdyn | Dynamic load rating | 21.6 kN |
| Co | Static load rating | 14.3 kN |
| Pu | Fatigue load limit | 0.601 kN |

Sealing

T SEAL / T SEAL + METAL SHIELD

- 3-lip seal on the base side and the 3-lip seal with Metal shield on the front side.
- 3-lip seal on the base side protects the bearing from contamination.
- 3-lip seal with a Metal shield on the front side eliminates bearing contaminants.

