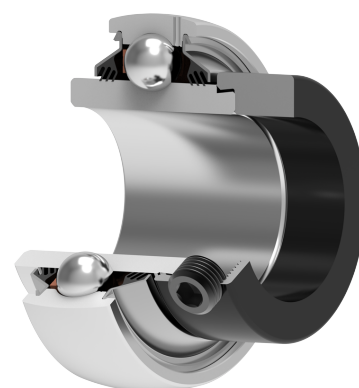
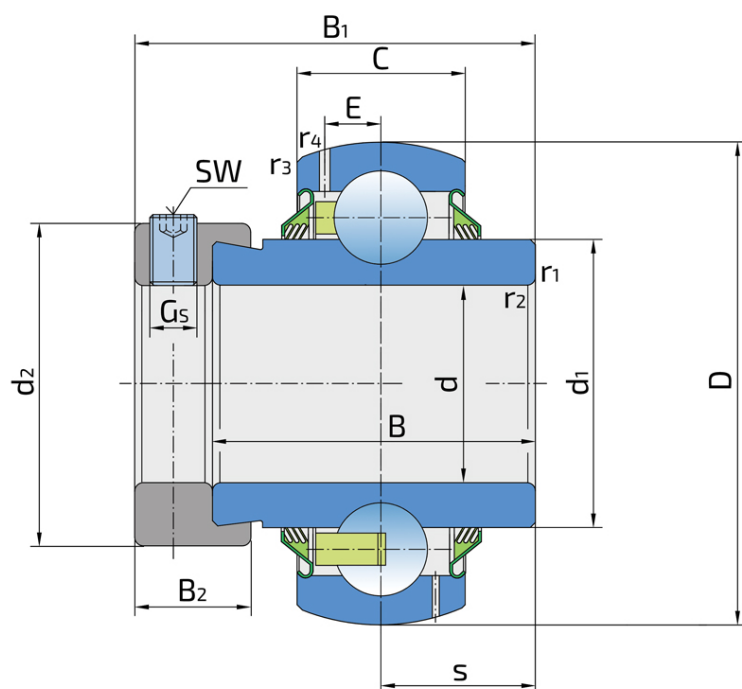


Y-Ball Bearings With Eccentric Locking Collar

LY 207 2T

Y-Ball Bearings With Eccentric Locking Collar



Technical Specification

| | | |
|------|--|----------|
| d | Bore diameter | 35 mm |
| D | Outside diameter | 72 mm |
| B | Width inner ring | 37.6 mm |
| C | Width outer ring | 19 mm |
| s | Distance from inner ring side face to raceway centre | 18.8 mm |
| d1 | Outer diameter inner ring | 46.1 mm |
| E | Distance from raceway centre to the hole for lubrication | 5.6 mm |
| Gs | Set screw | M10x1 mm |
| sw | Hexagonal key size for set screw | 5 mm |
| r1,2 | Inner ring Chamfer dimension | 1 mm |
| r3,4 | Outside ring Chamfer dimension | 1 mm |
| B1 | Width inner ring with locking collar | 51.1 mm |
| d2 | Locking collar outside diameter | 51.2 mm |
| B2 | Width locking collar | 17.5 mm |
| Cdyn | Dynamic load rating | 25.5 kN |
| Co | Static load rating | 15.3 kN |
| Pu | Fatigue load limit | 0.66 kN |
| kg | Mass | 0.57 kg |

Sealing

T SEAL / T SEAL (2T)

3-lip seal on the both side of the bearing, provides equal protection against contamination. Recommended for application where the possibility of contamination is the same on the both side.

