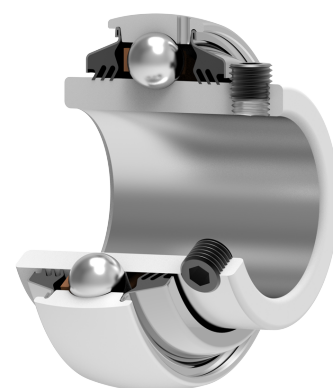
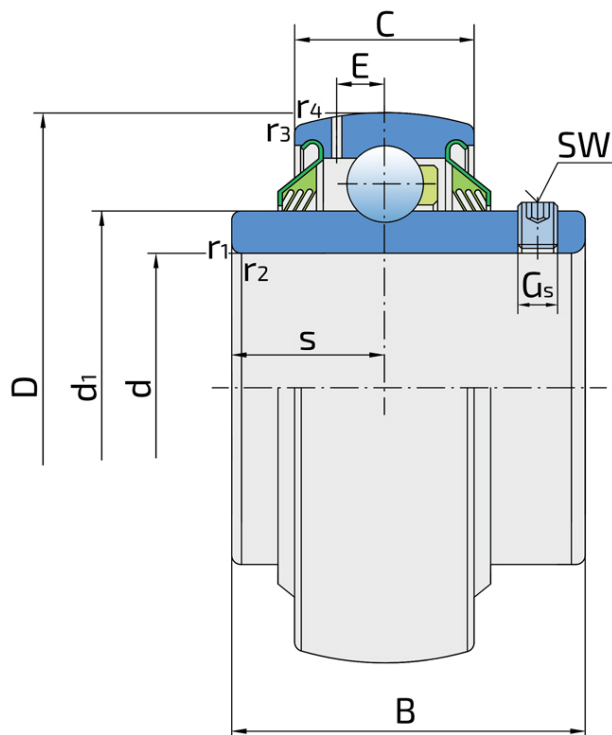


Y-Ball Bearings With Grub Screw Locking

LE 212 2T

Y-Ball Bearings With Grub Screw Locking



Technical Specification

d	Bore diameter	60 mm
D	Outside diameter	110 mm
B	Width inner ring	65.1 mm
C	Width outer ring	26 mm
s	Distance from inner ring side face to raceway centre	26 mm
d1	Inner ring outside diameter	75.5 mm
E	Distance from raceway centre to the hole for lubrication	7.7 mm
Gs	Set screw	M10x1 mm
sw	Hexagonal key size for set screw	5 mm
r1,2	Inner ring Chamfer dimension	1.5 mm
r3,4	Outside ring Chamfer dimension	2 mm
Cdyn	Dynamic load rating	52.7 kN
Co	Static load rating	36 kN
Pu	Fatigue load limit	1.53 kN
kg	Mass	1.3 kg

Sealing

T SEAL / T SEAL (2T)

3-lip seal on the both side of the bearing, provides equal protection against contamination. Recommended for application where the possibility of contamination is the same on the both side.

