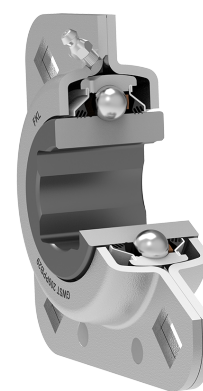
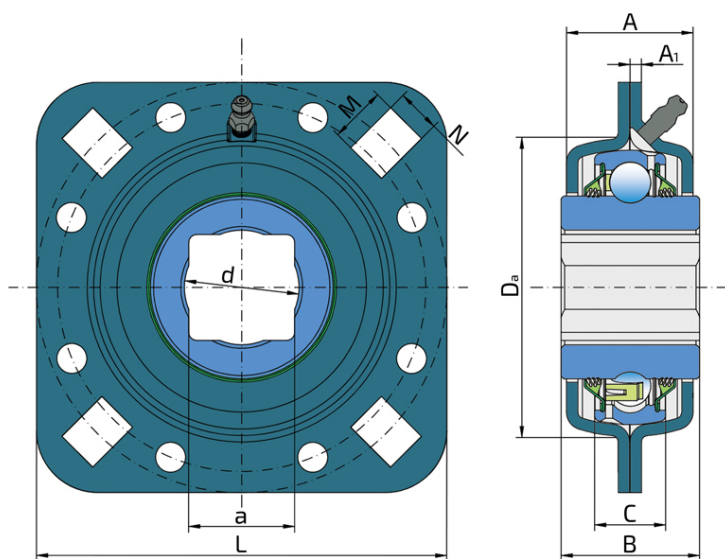


## Square Series

### GWST 209PPB29

#### Square Series

Cultivator, rolling harrow, disc ripper and vertical tillage



#### Technical Specification

d	Bore diameter	1.3976 inch
d	Bore diameter	35.5 mm
B	Width inner ring	42.85 mm
C	Width outer ring	22 mm
a	Shaft size	32.8 mm
Da	Centering diameter	97 mm
L	Total length	127 mm
A	Overall width	39 mm
A1	Width of the top of the housing	3.5 mm
J	Pitch circle diameter	127 mm
N	Rectangular hole size	13.5 mm
M	Rectangular hole size	17.5 mm
Fr	Radial load	7.7 kN
Fa	Axial load	3.8 kN
kg	Mass	1.63 kg
Cdyn	Dynamic load rating	32.5 kN
Co	Static load rating	20.4 kN
Pu	Fatigue load limit	0.857 kN

## Sealing

---

### T SEAL / T SEAL (2T)

3-lip seal on the both side of the bearing, provides equal protection against contamination. Recommended for application where the possibility of contamination is the same on the both side.

