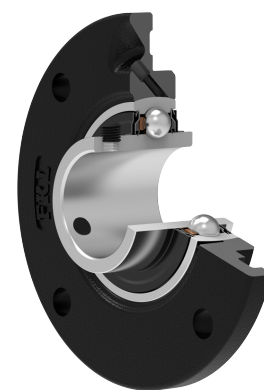
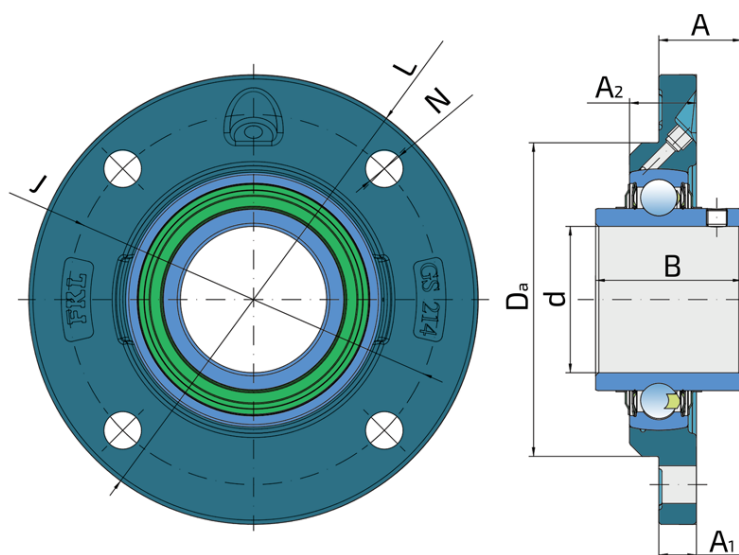


Housing units LEGS, four-bolt flanged housing units, cast iron, centring spigot, grub screw in inner ring, F seals

LEGS 214 2F

Housing units LEGS, four-bolt flanged housing units, cast iron, centring spigot, grub screw in inner ring, F seals

Harvester Solution



Technical Specification

d	Bore diameter	69.9 mm
Da	Centering diameter	150 mm
L	Diameter of housings	215 mm
A	Distance from the housing flange to the front of the inner ring of the bearing	39.7 mm
A1	Housing flange thickness	18 mm
A2	Height of the housing	32 mm
J	Pitch circle diameter	177 mm
N	Hole diameter	18 mm
B	Width inner ring	69.9 mm
kg	Mass	4.889 kg
Cdyn	Dynamic load rating	62.4 kN
Co	Static load rating	44 kN
Pu	Fatigue load limit	1.848 kN

Sealing

F SEAL / F SEAL (2F)

Dual sealing, protection cover placed on the inner ring protects against rough impurity particles and makes the labyrinth with the sheet part of the seal; then the sealing S type,

with the labyrinth between the sheet part and the rubber lip that conducts the contact sealing. The friction and speeds are the same as with S but has much better protection

against rough impurity particles. It is very good sealing system: the sheet part protects the seal from the soil, dust and

rough particles. At the same time makes the labyrinth with the rubber part. The rubber part provides the contact sealing that prevents the penetration of the finer impurities, water, moisture, steam etc. Suitable for heavier conditions due to better protection against foreign matters. It is used with the Y bearings (standard).

