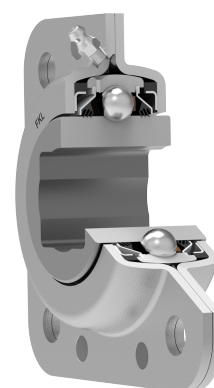
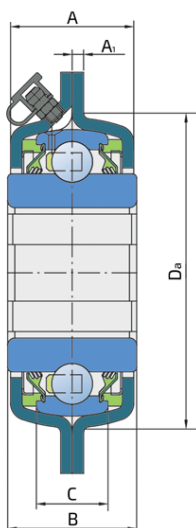
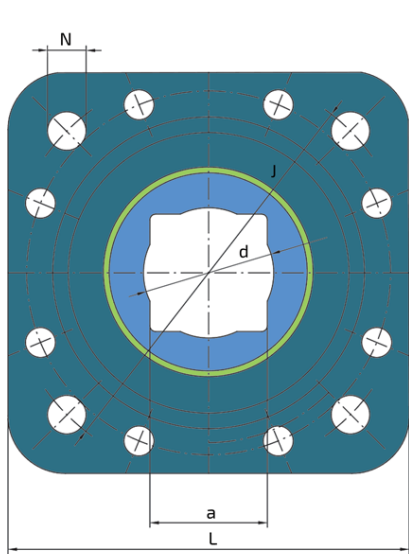


# Square Series

## GWST 211PPBP40

Square Series

Disc Harrow



### Technical Specification

a	Shaft size	40.5 mm
d	Bore diameter	45.5 mm
B	Width inner ring	45 mm
C	Width outer ring	25 mm
Da	Centering diameter	113 mm
L	Overall length	140 mm
A	Distance from the housing flange to the front of the inner ring of the bearing	44.7 mm
A1	Width of the top of the housing	4 mm
J	Pitch circle diameter	140 mm
N	Diameter of attachment slot	13.5 mm
Fr	Radial load	9.8 kN
Fa	Axial load	5.1 kN
kg	Mass	2.26 kg
Cdyn	Dynamic load rating	43.5 kN
Co	Static load rating	29 kN

## Sealing

### RUBBER PLUG + T SEAL / T SEAL + RUBBER PLUG

3-lip seal seal on both sides provide long lasting protection of the bearing against the penetration of contaminants. Rubber plugs are protecting the area between the bearing and sheet metal housing.

