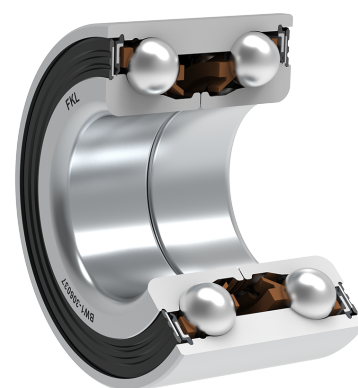
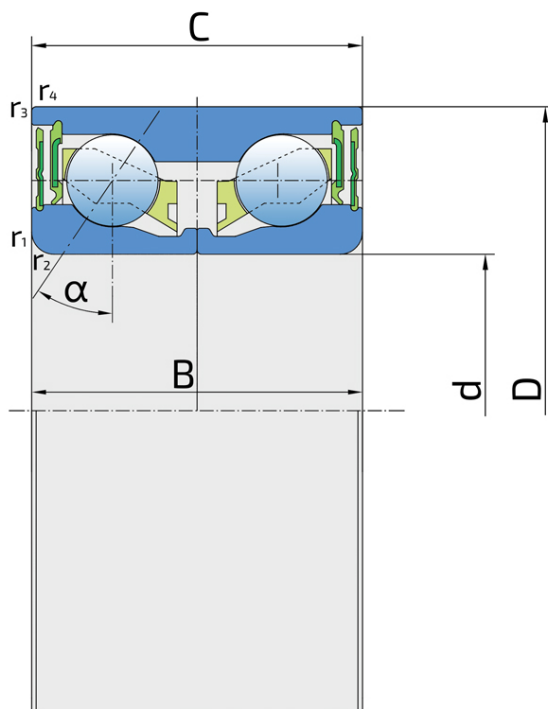


Double Row Angular Contact Ball Bearing

BW1-306037

Double Row Angular Contact Ball Bearing
Disc Harrow



Technical Specification

d	Bore diameter	30 mm
D	Outside diameter	60.03 mm
B	Width inner ring	37 mm
C	Width outer ring	37 mm
α	Contact angle	34 °
r1,2	Inner ring Chamfer dimension	2.5 mm
r3,4	Outside ring Chamfer dimension	0.5 mm
kg	Mass	0.47 kg
Cdyn	Dynamic load rating	37.5 kN
Co	Static load rating	26.5 kN
Pu	Fatigue load limit	1.113 kN

Sealing

RS SEAL / RS SEAL (2RS)

The older type of the single seal. Prevents penetration of soil, dust and water and since exposed to the impact of abrasive particles is expendable more than some new types of seals. Due to extended friction, the permitted speeds are lower. It was gradually replaced with the improved versions of S. Because of the traditional reasons Y bearings with this kind of seal do not have the additional sealing mark. It is used with the Y-bearings and deep groove ball bearings.

